

TEST REPORT

CLIENT DETAILS

Client Name: [REDACTED]
Client Contact: Van Chen
Telephone: [REDACTED]
Email: [REDACTED]
Address: [REDACTED]

LABORATORY DETAILS

SGS Affiliate: SGS Taiwan, CRS Textile & Footwear Service
SGS Contact: Anita Chuang
Telephone: 886-2-22993279 # 5201
Email: anita.chuang@sgs.com
Address: 31, Wu Chyuan Road, New Taipei Industrial Park, Wu Ku Dist., New Taipei City 24886, Taiwan

FACTORY DETAILS

Factory Name: [REDACTED]
Factory Contact: Van Chen
Telephone: [REDACTED]
Email: [REDACTED]
Address: [REDACTED]
Discharge Destination: Direct Discharge to Guanyin River

SAMPLE AND TESTING DETAILS

Sampling Country: SGS Taiwan EHS
Sampling Engineer: Mr. Chang
Sampling Date: 09/03/2018
Sample Received Date: 09/03/2018
Test Performing Period: 10/03/2018 - 23/03/2018
No. of Samples: Water (2); Sludge (1)
Sample Description: 1) Incoming water (Grab)
2) Discharged Wastewater (6-hour Composite)
3) Sludge (Grab)
Sample Volume: 35.82L water in total; 2250g sludge in total
Testing Institute: SGS Taiwan EHS 、 SGS Taiwan CCL
Discharge Method: Direct Discharge

REMARKS

- 1.This test document cannot be reproduced in any way, except in full content, without prior approval in writing by the laboratory.
- 2.The results shown in this test report refer only to the sampling and the sample(s) tested unless otherwise stated.

Signed for and on behalf of
SGS Taiwan Ltd.

Atina Hsieh
Atina Hsieh
Asst. Supervisor



This document is issued by the Company subject to its General Conditions of Service printed overleaf, available on request or accessible at <http://www.sgs.com/en/Terms-and-Conditions.aspx> and, for electronic format documents, subject to Terms and Conditions for Electronic Documents at <http://www.sgs.com/en/Terms-and-Conditions/Terms-e-Document.aspx>. Attention is drawn to the limitation of liability, indemnification and jurisdiction issues defined therein. Any holder of this document is advised that information contained hereon reflects the Company's findings at the time of its intervention only and within the limits of Client's instructions, if any. The Company's sole responsibility is to its Client and this document does not exonerate parties to a transaction from exercising all their rights and obligations under the transaction documents. This document cannot be reproduced except in full, without prior written approval of the Company. Any unauthorized alteration, forgery or falsification of the content or appearance of this document is unlawful and offenders may be prosecuted to the fullest extent of the law. Unless otherwise stated the results shown in this test report refer only to the sample(s) tested.

RESULT SUMMARY

TEST ITEMS	Incoming Water	Raw Waste Water	Discharged Waste Water	Sludge
Conventional Parameters	N/A	N/A	Please refer to the information in TEST RESULTS	N/A
Anions	N/A	N/A	X	X
Metals	O	N/A	X	X
Alkylphenols (APs) and Alkylphenol Ethoxylates (APEOs)	N/A	N/A	O	O
Chlorobenzenes and Chlorotoluenes (COCs)	N/A	N/A	O	O
Chlorophenols	N/A	N/A	O	O
Azo dyes	N/A	N/A	O	O
Carcinogenic dyes	N/A	N/A	O	O
Disperse dyes	N/A	N/A	O	O
Flame retardants	N/A	N/A	O	O
Glycols	N/A	N/A	O	O
Halogenated solvents	N/A	N/A	O	O
Organotin Compounds	N/A	N/A	O	O
Perfluorinated / Polyfluorinated Chemicals (PFCs)	N/A	N/A	O	O
Phthalates	N/A	N/A	O	O
Polycyclic Aromatic Hydrocarbons (PAHs)	N/A	N/A	O	O
Volatile Organic Compounds (VOCs)	N/A	N/A	O	O

Note:

X - Detected

O - Not Detected

N/A - Not Tested

TEST RESULTS

<div> <div></div> <div>Co., Ltd.</div> <div></div> <div></div> </div>		Sample ID	PX3003901		PX3004001	-	PX3004101	Factory Performance			
		Date of sampling	03/09/2018		03/09/2018	-	03/09/2018				
		Sampling Location	-		-	-	-				
		Sampling start time	09:32		09:00	-	08:50				
		Sampling end time	09:45		15:15	-	08:56				
		Date of sample received	09/03/2018		09/03/2018	-	09/03/2018				
ITEMS	CAS No.	UNIT	Incoming Water	Raw Waste Water	Discharged Waste Water	UNIT	Sludge ϕ	Incoming Water	Raw Waste Water	Discharged Waste Water	Sludge
Sample Colour Description	-	-	Colourless	-	Brown	-	Black	-	-	-	-
Conventional Parameters											
Temperature	-	°C	-	-	25.3	-	-	-	-	Fulfill Progressive Limit	-
TSS	-	mg/L	-	-	n.d.	-	-	-	-	Fulfill Aspirational Limit	-
COD	-	mg/L	-	-	87	-	-	-	-	Fulfill Foundational Limit	-
Total Nitrogen (Total-N)	-	mg/L	-	-	n.d.	-	-	-	-	Fulfill Aspirational Limit	-
pH Value	-	-	-	-	6.8	-	-	-	-	Fulfill Aspirational Limit	-
Colour (436nm; 525nm; 620nm)	-	m ⁻¹	-	-	7.2; 2.6; 0.5	-	-	-	-	Exceed Foundation Limit	-
BOD (5-day)	-	mg/L	-	-	7	-	-	-	-	Fulfill Progressive Limit	-
Ammonium Nitrogen (Ammonium-N)	-	mg/L	-	-	n.d.	-	-	-	-	Fulfill Aspirational Limit	-
Total Phosphorus (Total-P)	-	mg P/L	-	-	n.d.	-	-	-	-	Fulfill Aspirational Limit	-
AOX	-	mg/L	-	-	n.d.	-	-	-	-	Fulfill Aspirational Limit	-
Oil and Grease	-	mg/L	-	-	0.7	-	-	-	-	Fulfill Progressive Limit	-
Phenol	-	mg/L	-	-	0.003	-	-	-	-	Fulfill Progressive Limit	-
Coliform	-	Bacteria / 100ml	-	-	70	-	-	-	-	Fulfill Progressive Limit	-
Persistent Foam	-	-	-	-	Not visible	-	-	-	-	Fulfill Aspirational Limit	-
Anions											

This document is issued by the Company subject to its General Conditions of Service printed overleaf, available on request or accessible at <http://www.sgs.com/en/Terms-and-Conditions.aspx> and, for electronic format documents, subject to Terms and Conditions for Electronic Documents at <http://www.sgs.com/en/Terms-and-Conditions/Terms-e-Documents.aspx>. Attention is drawn to the limitation of liability, indemnification and jurisdiction issues defined therein. Any holder of this document is advised that information contained hereon reflects the Company's findings at the time of its intervention only and within the limits of Client's instructions, if any. The Company's sole responsibility is to its Client and this document does not exonerate parties to a transaction from exercising all their rights and obligations under the transaction documents. This document cannot be reproduced except in full, without prior written approval of the Company. Any unauthorized alteration, forgery or falsification of the content or appearance of this document is unlawful and offenders may be prosecuted to the fullest extent of the law. Unless otherwise stated the results shown in this test report refer only to the sample(s) tested.

TEST RESULTS

<div> <div></div> <div>Co., Ltd.</div> <div></div> <div></div> </div>		Sample ID	PX3003901		PX3004001	-	PX3004101	Factory Performance			
		Date of sampling	03/09/2018		03/09/2018	-	03/09/2018				
		Sampling Location	-		-	-	-				
		Sampling start time	09:32		09:00	-	08:50				
		Sampling end time	09:45		15:15	-	08:56				
		Date of sample received	09/03/2018		09/03/2018	-	09/03/2018				
ITEMS	CAS No.	UNIT	Incoming Water	Raw Waste Water	Discharged Waste Water	UNIT	SludgeΦ	Incoming Water	Raw Waste Water	Discharged Waste Water	Sludge
Cyanide	-	mg/L	-	-	n.d.	mg/kg	5.4	-	-	Fulfill Aspirational Limit	Detected
Sulfide	-	mg/L	-	-	0.02	-	-	-	-	Fulfill Progressive Limit	-
Sulfite	-	mg/L	-	-	n.d.	-	-	-	-	Fulfill Aspirational Limit	-
Metals											
Total Antimony (Sb)	7440-36-0	mg/L	n.d.	-	0.27	-	-	Fulfill Aspirational Limit	-	Exceed Foundational Limit	-
Total Chromium (Cr)	7440-47-3	mg/L	n.d.	-	n.d.	-	-	Fulfill Aspirational Limit	-	Fulfill Aspirational Limit	-
Total Cobalt (Co)	7440-48-4	mg/L	n.d.	-	n.d.	-	-	Fulfill Aspirational Limit	-	Fulfill Aspirational Limit	-
Total Copper (Cu)	7440-50-8	mg/L	n.d.	-	n.d.	-	-	Fulfill Aspirational Limit	-	Fulfill Aspirational Limit	-
Total Nickel (Ni)	7440-02-0	mg/L	n.d.	-	n.d.	-	-	Fulfill Aspirational Limit	-	Fulfill Aspirational Limit	-
Total Silver (Ag)	7440-22-4	mg/L	n.d.	-	n.d.	-	-	Fulfill Aspirational Limit	-	Fulfill Aspirational Limit	-
Total Zinc (Zn)	7440-66-6	mg/L	n.d.	-	n.d.	-	-	Fulfill Aspirational Limit	-	Fulfill Aspirational Limit	-
Total Arsenic (As)	7440-38-2	mg/L	n.d.	-	n.d.	mg/kg	12	Fulfill Aspirational Limit	-	Fulfill Aspirational Limit	Detected
Total Cadmium (Cd)	7440-43-9	mg/L	n.d.	-	n.d.	mg/kg	n.d.	Fulfill Aspirational Limit	-	Fulfill Aspirational Limit	Not Detected
Total Hexavalent Chromium(Cr-VI)	7440-47-3, 18540-29-9	mg/L	n.d.	-	n.d.	mg/kg	n.d.	Fulfill Aspirational Limit	-	Fulfill Aspirational Limit	Not Detected
Total Lead (Pb)	7439-92-1	mg/L	n.d.	-	n.d.	mg/kg	10	Fulfill Aspirational Limit	-	Fulfill Aspirational Limit	Detected
Total Mercury (Hg)	7439-97-6	mg/L	n.d.	-	n.d.	mg/kg	n.d.	Fulfill Aspirational Limit	-	Fulfill Aspirational Limit	Not Detected
Alkylphenols (APs) and Alkylphenol Ethoxylates (APEOs)											

This document is issued by the Company subject to its General Conditions of Service printed overleaf, available on request or accessible at <http://www.sgs.com/en/Terms-and-Conditions.aspx> and, for electronic format documents, subject to Terms and Conditions for Electronic Documents at <http://www.sgs.com/en/Terms-and-Conditions/Terms-e-Document.aspx>. Attention is drawn to the limitation of liability, indemnification and jurisdiction issues defined therein. Any holder of this document is advised that information contained hereon reflects the Company's findings at the time of its intervention only and within the limits of Client's instructions, if any. The Company's sole responsibility is to its Client and this document does not exonerate parties to a transaction from exercising all their rights and obligations under the transaction documents. This document cannot be reproduced except in full, without prior written approval of the Company. Any unauthorized alteration, forgery or falsification of the content or appearance of this document is unlawful and offenders may be prosecuted to the fullest extent of the law. Unless otherwise stated the results shown in this test report refer only to the sample(s) tested.

TEST RESULTS

<div> <div></div> <div>Co., Ltd.</div> <div></div> <div></div> </div>		Sample ID	PX3003901		PX3004001	-	PX3004101	Factory Performance			
		Date of sampling	03/09/2018		03/09/2018	-	03/09/2018				
		Sampling Location	-		-	-	-				
		Sampling start time	09:32		09:00	-	08:50				
		Sampling end time	09:45		15:15	-	08:56				
		Date of sample received	09/03/2018		09/03/2018	-	09/03/2018				
ITEMS	CAS No.	UNIT	Incoming Water	Raw Waste Water	Discharged Waste Water	UNIT	SludgeΦ	Incoming Water	Raw Waste Water	Discharged Waste Water	Sludge
Nonylphenol (NP), mixed isomers	Multiple, including 104-40-5, 11066-49-2, 25154-52-3, 84852-15-3, 90481-04-2, 1173019-62-9	µg/L	-	-	n.d.	mg/kg	n.d.	-	-	Not Detected	Not Detected
Octylphenol (OP), mixed isomers	Multiple, including 140-66-9, 1806-26-4, 27193-28-8	µg/L	-	-	n.d.	mg/kg	n.d.	-	-	Not Detected	Not Detected
Octylphenol ethoxylates (OPEO)	Multiple, including 9002-93-1, 9036-19-5, 68987-90-6	µg/L	-	-	n.d.	mg/kg	n.d.	-	-	Not Detected	Not Detected
Nonylphenol ethoxylates (NPEO)	Multiple, including 9016-45-9, 26027-38-3, 37205-87-1, 68412-54-4, 127087-87-0	µg/L	-	-	n.d.	mg/kg	n.d.	-	-	Not Detected	Not Detected
Chlorobenzenes and Chlorotoluenes (COCs)											
Monochlorobenzenes	108-90-7	µg/L	-	-	n.d.	mg/kg	n.d.	-	-	Not Detected	Not Detected
1,2-Dichlorobenzene	95-50-1	µg/L	-	-	n.d.	mg/kg	n.d.	-	-	Not Detected	Not Detected
1,3-Dichlorobenzene	541-73-1	µg/L	-	-	n.d.	mg/kg	n.d.	-	-	Not Detected	Not Detected
1,4-Dichlorobenzene	106-46-7	µg/L	-	-	n.d.	mg/kg	n.d.	-	-	Not Detected	Not Detected
1,2,3-Trichlorobenzene	87-61-6	µg/L	-	-	n.d.	mg/kg	n.d.	-	-	Not Detected	Not Detected
1,2,4-Trichlorobenzene	120-82-1	µg/L	-	-	n.d.	mg/kg	n.d.	-	-	Not Detected	Not Detected
1,3,5-Trichlorobenzene	108-70-3	µg/L	-	-	n.d.	mg/kg	n.d.	-	-	Not Detected	Not Detected
1,2,3,4-Tetrachlorobenzene	634-66-2	µg/L	-	-	n.d.	mg/kg	n.d.	-	-	Not Detected	Not Detected
1,2,3,5-Tetrachlorobenzene	634-90-2	µg/L	-	-	n.d.	mg/kg	n.d.	-	-	Not Detected	Not Detected

This document is issued by the Company subject to its General Conditions of Service printed overleaf, available on request or accessible at <http://www.sgs.com/en/Terms-and-Conditions.aspx> and, for electronic format documents, subject to Terms and Conditions for Electronic Documents at <http://www.sgs.com/en/Terms-and-Conditions/Terms-e-Documents.aspx>. Attention is drawn to the limitation of liability, indemnification and jurisdiction issues defined therein. Any holder of this document is advised that information contained hereon reflects the Company's findings at the time of its intervention only and within the limits of Client's instructions, if any. The Company's sole responsibility is to its Client and this document does not exonerate parties to a transaction from exercising all their rights and obligations under the transaction documents. This document cannot be reproduced except in full, without prior written approval of the Company. Any unauthorized alteration, forgery or falsification of the content or appearance of this document is unlawful and offenders may be prosecuted to the fullest extent of the law. Unless otherwise stated the results shown in this test report refer only to the sample(s) tested.

TEST RESULTS

<div> <div></div> <div>Co., Ltd.</div> <div></div> <div></div> </div>		Sample ID	PX3003901		PX3004001	-	PX3004101	Factory Performance			
		Date of sampling	03/09/2018		03/09/2018	-	03/09/2018				
		Sampling Location	-		-	-	-				
		Sampling start time	09:32		09:00	-	08:50				
		Sampling end time	09:45		15:15	-	08:56				
		Date of sample received	09/03/2018		09/03/2018	-	09/03/2018				
ITEMS	CAS No.	UNIT	Incoming Water	Raw Waste Water	Discharged Waste Water	UNIT	Sludge Φ	Incoming Water	Raw Waste Water	Discharged Waste Water	Sludge
1,2,4,5-Tetrachlorobenzene	95-94-3	$\mu\text{g/L}$	-	-	n.d.	mg/kg	n.d.	-	-	Not Detected	Not Detected
Pentachlorobenzene	608-93-5	$\mu\text{g/L}$	-	-	n.d.	mg/kg	n.d.	-	-	Not Detected	Not Detected
Hexachlorobenzene	118-74-1	$\mu\text{g/L}$	-	-	n.d.	mg/kg	n.d.	-	-	Not Detected	Not Detected
2-Chlorotoluene	95-49-8	$\mu\text{g/L}$	-	-	n.d.	mg/kg	n.d.	-	-	Not Detected	Not Detected
3-Chlorotoluene	108-41-8	$\mu\text{g/L}$	-	-	n.d.	mg/kg	n.d.	-	-	Not Detected	Not Detected
4-Chlorotoluene	106-43-4	$\mu\text{g/L}$	-	-	n.d.	mg/kg	n.d.	-	-	Not Detected	Not Detected
2,3-Dichlorotoluene	32768-54-0	$\mu\text{g/L}$	-	-	n.d.	mg/kg	n.d.	-	-	Not Detected	Not Detected
2,4-Dichlorotoluene	95-73-8	$\mu\text{g/L}$	-	-	n.d.	mg/kg	n.d.	-	-	Not Detected	Not Detected
2,5-Dichlorotoluene	19398-61-9	$\mu\text{g/L}$	-	-	n.d.	mg/kg	n.d.	-	-	Not Detected	Not Detected
2,6-Dichlorotoluene	118-69-4	$\mu\text{g/L}$	-	-	n.d.	mg/kg	n.d.	-	-	Not Detected	Not Detected
3,4-Dichlorotoluene	95-75-0	$\mu\text{g/L}$	-	-	n.d.	mg/kg	n.d.	-	-	Not Detected	Not Detected
3,5-Dichlorotoluene	25186-47-4	$\mu\text{g/L}$	-	-	n.d.	mg/kg	n.d.	-	-	Not Detected	Not Detected
2,3,4-Trichlorotoluene	7359-72-0	$\mu\text{g/L}$	-	-	n.d.	mg/kg	n.d.	-	-	Not Detected	Not Detected
2,3,6-Trichlorotoluene	2077-46-5	$\mu\text{g/L}$	-	-	n.d.	mg/kg	n.d.	-	-	Not Detected	Not Detected
2,4,5-Trichlorotoluene	6639-30-1	$\mu\text{g/L}$	-	-	n.d.	mg/kg	n.d.	-	-	Not Detected	Not Detected
2,4,6-Trichlorotoluene	23749-65-7	$\mu\text{g/L}$	-	-	n.d.	mg/kg	n.d.	-	-	Not Detected	Not Detected
3,4,5-Trichlorotoluene	21472-86-6	$\mu\text{g/L}$	-	-	n.d.	mg/kg	n.d.	-	-	Not Detected	Not Detected
2,3,4,5-Tetrachlorotoluene	76057-12-0	$\mu\text{g/L}$	-	-	n.d.	mg/kg	n.d.	-	-	Not Detected	Not Detected
2,3,5,6-Tetrachlorotoluene	29733-70-8	$\mu\text{g/L}$	-	-	n.d.	mg/kg	n.d.	-	-	Not Detected	Not Detected
2,3,4,6-Tetrachlorotoluene	875-40-1	$\mu\text{g/L}$	-	-	n.d.	mg/kg	n.d.	-	-	Not Detected	Not Detected
Pentachlorotoluene	877-11-2	$\mu\text{g/L}$	-	-	n.d.	mg/kg	n.d.	-	-	Not Detected	Not Detected
Chlorophenols											

This document is issued by the Company subject to its General Conditions of Service printed overleaf, available on request or accessible at <http://www.sgs.com/en/Terms-and-Conditions.aspx> and, for electronic format documents, subject to Terms and Conditions for Electronic Documents at <http://www.sgs.com/en/Terms-and-Conditions/Terms-e-Documents.aspx>. Attention is drawn to the limitation of liability, indemnification and jurisdiction issues defined therein. Any holder of this document is advised that information contained hereon reflects the Company's findings at the time of its intervention only and within the limits of Client's instructions, if any. The Company's sole responsibility is to its Client and this document does not exonerate parties to a transaction from exercising all their rights and obligations under the transaction documents. This document cannot be reproduced except in full, without prior written approval of the Company. Any unauthorized alteration, forgery or falsification of the content or appearance of this document is unlawful and offenders may be prosecuted to the fullest extent of the law. Unless otherwise stated the results shown in this test report refer only to the sample(s) tested.

TEST RESULTS

<div> <div></div> <div>Co., Ltd.</div> <div></div> <div></div> </div>	Sample ID	PX3003901		PX3004001	-	PX3004101	Factory Performance				
	Date of sampling	03/09/2018		03/09/2018	-	03/09/2018					
	Sampling Location	-		-	-	-					
	Sampling start time	09:32		09:00	-	08:50					
	Sampling end time	09:45		15:15	-	08:56					
	Date of sample received	09/03/2018		09/03/2018	-	09/03/2018					
ITEMS	CAS No.	UNIT	Incoming Water	Raw Waste Water	Discharged Waste Water	UNIT	Sludge Φ	Incoming Water	Raw Waste Water	Discharged Waste Water	Sludge
2-Chlorophenol	95-57-8	$\mu\text{g/L}$	-	-	n.d.	mg/kg	n.d.	-	-	Not Detected	Not Detected
3-Chlorophenol	108-43-0	$\mu\text{g/L}$	-	-	n.d.	mg/kg	n.d.	-	-	Not Detected	Not Detected
4-Chlorophenol	106-48-9	$\mu\text{g/L}$	-	-	n.d.	mg/kg	n.d.	-	-	Not Detected	Not Detected
2,3-Dichlorophenol	576-24-9	$\mu\text{g/L}$	-	-	n.d.	mg/kg	n.d.	-	-	Not Detected	Not Detected
2,4-Dichlorophenol	120-83-2	$\mu\text{g/L}$	-	-	n.d.	mg/kg	n.d.	-	-	Not Detected	Not Detected
2,5-Dichlorophenol	583-78-8	$\mu\text{g/L}$	-	-	n.d.	mg/kg	n.d.	-	-	Not Detected	Not Detected
2,6-Dichlorophenol	87-65-0	$\mu\text{g/L}$	-	-	n.d.	mg/kg	n.d.	-	-	Not Detected	Not Detected
3,4-Dichlorophenol	95-77-2	$\mu\text{g/L}$	-	-	n.d.	mg/kg	n.d.	-	-	Not Detected	Not Detected
3,5-Dichlorophenol	591-35-5	$\mu\text{g/L}$	-	-	n.d.	mg/kg	n.d.	-	-	Not Detected	Not Detected
2,3,4-Trichlorophenol	15950-66-0	$\mu\text{g/L}$	-	-	n.d.	mg/kg	n.d.	-	-	Not Detected	Not Detected
2,3,5-Trichlorophenol	933-78-8	$\mu\text{g/L}$	-	-	n.d.	mg/kg	n.d.	-	-	Not Detected	Not Detected
2,3,6-Trichlorophenol	933-75-5	$\mu\text{g/L}$	-	-	n.d.	mg/kg	n.d.	-	-	Not Detected	Not Detected
2,4,5-Trichlorophenol	95-95-4	$\mu\text{g/L}$	-	-	n.d.	mg/kg	n.d.	-	-	Not Detected	Not Detected
2,4,6-Trichlorophenol	88-06-2	$\mu\text{g/L}$	-	-	n.d.	mg/kg	n.d.	-	-	Not Detected	Not Detected
3,4,5-Trichlorophenol	609-19-8	$\mu\text{g/L}$	-	-	n.d.	mg/kg	n.d.	-	-	Not Detected	Not Detected
2,3,4,5-Tetrachlorophenol	4901-51-3	$\mu\text{g/L}$	-	-	n.d.	mg/kg	n.d.	-	-	Not Detected	Not Detected
2,3,4,6-Tetrachlorophenol	58-90-2	$\mu\text{g/L}$	-	-	n.d.	mg/kg	n.d.	-	-	Not Detected	Not Detected
2,3,5,6-Tetrachlorophenol	935-95-5	$\mu\text{g/L}$	-	-	n.d.	mg/kg	n.d.	-	-	Not Detected	Not Detected
Pentachlorophenol	87-86-5	$\mu\text{g/L}$	-	-	n.d.	mg/kg	n.d.	-	-	Not Detected	Not Detected
Azo dyes											
4,4'-Methylene-Bis(2-Chloroaniline)	101-14-4	$\mu\text{g/L}$	-	-	n.d.	mg/kg	n.d.	-	-	Not Detected	Not Detected
4,4'-Diaminodiphenylmethane	101-77-9	$\mu\text{g/L}$	-	-	n.d.	mg/kg	n.d.	-	-	Not Detected	Not Detected

This document is issued by the Company subject to its General Conditions of Service printed overleaf, available on request or accessible at <http://www.sgs.com/en/Terms-and-Conditions.aspx> and, for electronic format documents, subject to Terms and Conditions for Electronic Documents at <http://www.sgs.com/en/Terms-and-Conditions/Terms-e-Document.aspx>. Attention is drawn to the limitation of liability, indemnification and jurisdiction issues defined therein. Any holder of this document is advised that information contained hereon reflects the Company's findings at the time of its intervention only and within the limits of Client's instructions, if any. The Company's sole responsibility is to its Client and this document does not exonerate parties to a transaction from exercising all their rights and obligations under the transaction documents. This document cannot be reproduced except in full, without prior written approval of the Company. Any unauthorized alteration, forgery or falsification of the content or appearance of this document is unlawful and offenders may be prosecuted to the fullest extent of the law. Unless otherwise stated the results shown in this test report refer only to the sample(s) tested.

TEST RESULTS

<div> <div></div> <div>Co., Ltd.</div> <div></div> <div></div> </div>		Sample ID	PX3003901		PX3004001	-	PX3004101	Factory Performance			
		Date of sampling	03/09/2018		03/09/2018	-	03/09/2018				
		Sampling Location	-		-	-	-				
		Sampling start time	09:32		09:00	-	08:50				
		Sampling end time	09:45		15:15	-	08:56				
		Date of sample received	09/03/2018		09/03/2018	-	09/03/2018				
ITEMS	CAS No.	UNIT	Incoming Water	Raw Waste Water	Discharged Waste Water	UNIT	SludgeΦ	Incoming Water	Raw Waste Water	Discharged Waste Water	Sludge
4,4'-Oxydianiline	101-80-4	µg/L	-	-	n.d.	mg/kg	n.d.	-	-	Not Detected	Not Detected
p-Chloroaniline	106-47-8	µg/L	-	-	n.d.	mg/kg	n.d.	-	-	Not Detected	Not Detected
3,3'-Dimethoxybenzidine	119-90-4	µg/L	-	-	n.d.	mg/kg	n.d.	-	-	Not Detected	Not Detected
3,3'-Dimethylbenzidine	119-93-7	µg/L	-	-	n.d.	mg/kg	n.d.	-	-	Not Detected	Not Detected
p-Cresidine	120-71-8	µg/L	-	-	n.d.	mg/kg	n.d.	-	-	Not Detected	Not Detected
2,4,5-Trimethylaniline	137-17-7	µg/L	-	-	n.d.	mg/kg	n.d.	-	-	Not Detected	Not Detected
4,4'-Thiodianiline	139-65-1	µg/L	-	-	n.d.	mg/kg	n.d.	-	-	Not Detected	Not Detected
p-Aminoazobenzene	60-09-3	µg/L	-	-	n.d.	mg/kg	n.d.	-	-	Not Detected	Not Detected
2,4-Diaminoanisole	615-05-4	µg/L	-	-	n.d.	mg/kg	n.d.	-	-	Not Detected	Not Detected
3,3'-Dimethyl-4,4'-diaminodiphenylmethane	838-88-0	µg/L	-	-	n.d.	mg/kg	n.d.	-	-	Not Detected	Not Detected
2,6-Xylidine	87-62-7	µg/L	-	-	n.d.	mg/kg	n.d.	-	-	Not Detected	Not Detected
o-Anisidine	90-04-0	µg/L	-	-	n.d.	mg/kg	n.d.	-	-	Not Detected	Not Detected
2-Naphthylamine	91-59-8	µg/L	-	-	n.d.	mg/kg	n.d.	-	-	Not Detected	Not Detected
3,3'-Dichlorobenzidine	91-94-1	µg/L	-	-	n.d.	mg/kg	n.d.	-	-	Not Detected	Not Detected
4-Aminodiphenyl	92-67-1	µg/L	-	-	n.d.	mg/kg	n.d.	-	-	Not Detected	Not Detected
Benzidine	92-87-5	µg/L	-	-	n.d.	mg/kg	n.d.	-	-	Not Detected	Not Detected
o-Toluidine	95-53-4	µg/L	-	-	n.d.	mg/kg	n.d.	-	-	Not Detected	Not Detected
2,4-Xylidine	95-68-1	µg/L	-	-	n.d.	mg/kg	n.d.	-	-	Not Detected	Not Detected
4-Chloro-o-Toluidine	95-69-2	µg/L	-	-	n.d.	mg/kg	n.d.	-	-	Not Detected	Not Detected
2,4-Toluylenediamine	95-80-7	µg/L	-	-	n.d.	mg/kg	n.d.	-	-	Not Detected	Not Detected
o-Aminoazotoluene	97-56-3	µg/L	-	-	n.d.	mg/kg	n.d.	-	-	Not Detected	Not Detected
2-Amino-4-Nitrotoluene	99-55-8	µg/L	-	-	n.d.	mg/kg	n.d.	-	-	Not Detected	Not Detected

This document is issued by the Company subject to its General Conditions of Service printed overleaf, available on request or accessible at <http://www.sgs.com/en/Terms-and-Conditions.aspx> and, for electronic format documents, subject to Terms and Conditions for Electronic Documents at <http://www.sgs.com/en/Terms-and-Conditions/Terms-e-Documents.aspx>. Attention is drawn to the limitation of liability, indemnification and jurisdiction issues defined therein. Any holder of this document is advised that information contained hereon reflects the Company's findings at the time of its intervention only and within the limits of Client's instructions, if any. The Company's sole responsibility is to its Client and this document does not exonerate parties to a transaction from exercising all their rights and obligations under the transaction documents. This document cannot be reproduced except in full, without prior written approval of the Company. Any unauthorized alteration, forgery or falsification of the content or appearance of this document is unlawful and offenders may be prosecuted to the fullest extent of the law. Unless otherwise stated the results shown in this test report refer only to the sample(s) tested.

TEST RESULTS

<div> <div></div> <div>Co., Ltd.</div> <div></div> <div></div> </div>		Sample ID	PX3003901		PX3004001	-	PX3004101	Factory Performance			
		Date of sampling	03/09/2018		03/09/2018	-	03/09/2018				
		Sampling Location	-		-	-	-				
		Sampling start time	09:32		09:00	-	08:50				
		Sampling end time	09:45		15:15	-	08:56				
		Date of sample received	09/03/2018		09/03/2018	-	09/03/2018				
ITEMS	CAS No.	UNIT	Incoming Water	Raw Waste Water	Discharged Waste Water	UNIT	SludgeΦ	Incoming Water	Raw Waste Water	Discharged Waste Water	Sludge
Carcinogenic dyes											
Direct Black 38	1937-37-7	µg/L	-	-	n.d.	mg/kg	n.d.	-	-	Not Detected	Not Detected
Direct Blue 6	2602-46-2	µg/L	-	-	n.d.	mg/kg	n.d.	-	-	Not Detected	Not Detected
Acid Red 26	3761-53-3	µg/L	-	-	n.d.	mg/kg	n.d.	-	-	Not Detected	Not Detected
Basic Red 9	569-61-9	µg/L	-	-	n.d.	mg/kg	n.d.	-	-	Not Detected	Not Detected
Direct Red 28	573-58-0	µg/L	-	-	n.d.	mg/kg	n.d.	-	-	Not Detected	Not Detected
Basic Violet 14	632-99-5	µg/L	-	-	n.d.	mg/kg	n.d.	-	-	Not Detected	Not Detected
Disperse Blue 1	2475-45-8	µg/L	-	-	n.d.	mg/kg	n.d.	-	-	Not Detected	Not Detected
Disperse Blue 3	2475-46-9	µg/L	-	-	n.d.	mg/kg	n.d.	-	-	Not Detected	Not Detected
Basic Blue 26	2580-56-5	µg/L	-	-	n.d.	mg/kg	n.d.	-	-	Not Detected	Not Detected
Basic Green 4 (malachite green chloride)^	569-64-2	µg/L	-	-	n.d.	mg/kg	n.d.	-	-	Not Detected	Not Detected
Basic Green 4 (malachite green oxalate)^	2437-29-8	µg/L	-	-	n.d.	mg/kg	n.d.	-	-	Not Detected	Not Detected
Basic Green 4 (malachite green)	10309-95-2	µg/L	-	-	n.d.	mg/kg	n.d.	-	-	Not Detected	Not Detected
Disperse Orange 11	82-28-0	µg/L	-	-	n.d.	mg/kg	n.d.	-	-	Not Detected	Not Detected
Disperse dyes											
Disperse Yellow 1	119-15-3	µg/L	-	-	n.d.	mg/kg	n.d.	-	-	Not Detected	Not Detected
Disperse Blue 102	12222-97-8	µg/L	-	-	n.d.	mg/kg	n.d.	-	-	Not Detected	Not Detected
Disperse Blue 106	12223-01-7	µg/L	-	-	n.d.	mg/kg	n.d.	-	-	Not Detected	Not Detected
Disperse Yellow 39	12236-29-2	µg/L	-	-	n.d.	mg/kg	n.d.	-	-	Not Detected	Not Detected
Disperse Orange 37/59/76	13301-61-6	µg/L	-	-	n.d.	mg/kg	n.d.	-	-	Not Detected	Not Detected
Disperse Brown 1	23355-64-8	µg/L	-	-	n.d.	mg/kg	n.d.	-	-	Not Detected	Not Detected
Disperse Orange 1	2581-69-3	µg/L	-	-	n.d.	mg/kg	n.d.	-	-	Not Detected	Not Detected

This document is issued by the Company subject to its General Conditions of Service printed overleaf, available on request or accessible at <http://www.sgs.com/en/Terms-and-Conditions.aspx> and, for electronic format documents, subject to Terms and Conditions for Electronic Documents at <http://www.sgs.com/en/Terms-and-Conditions/Terms-e-Documents.aspx>. Attention is drawn to the limitation of liability, indemnification and jurisdiction issues defined therein. Any holder of this document is advised that information contained hereon reflects the Company's findings at the time of its intervention only and within the limits of Client's instructions, if any. The Company's sole responsibility is to its Client and this document does not exonerate parties to a transaction from exercising all their rights and obligations under the transaction documents. This document cannot be reproduced except in full, without prior written approval of the Company. Any unauthorized alteration, forgery or falsification of the content or appearance of this document is unlawful and offenders may be prosecuted to the fullest extent of the law. Unless otherwise stated the results shown in this test report refer only to the sample(s) tested.

TEST RESULTS

<div> <div></div> <div>Co., Ltd.</div> <div></div> <div></div> <div></div> </div>		Sample ID	PX3003901		PX3004001	-	PX3004101	Factory Performance			
		Date of sampling	03/09/2018		03/09/2018	-	03/09/2018				
		Sampling Location	-		-	-	-				
		Sampling start time	09:32		09:00	-	08:50				
		Sampling end time	09:45		15:15	-	08:56				
		Date of sample received	09/03/2018		09/03/2018	-	09/03/2018				
ITEMS	CAS No.	UNIT	Incoming Water	Raw Waste Water	Discharged Waste Water	UNIT	SludgeΦ	Incoming Water	Raw Waste Water	Discharged Waste Water	Sludge
Disperse Yellow 3	2832-40-8	µg/L	-	-	n.d.	mg/kg	n.d.	-	-	Not Detected	Not Detected
Disperse Red 11	2872-48-2	µg/L	-	-	n.d.	mg/kg	n.d.	-	-	Not Detected	Not Detected
Disperse Red 1	2872-52-8	µg/L	-	-	n.d.	mg/kg	n.d.	-	-	Not Detected	Not Detected
Disperse Red 17	3179-89-3	µg/L	-	-	n.d.	mg/kg	n.d.	-	-	Not Detected	Not Detected
Disperse Blue 7	3179-90-6	µg/L	-	-	n.d.	mg/kg	n.d.	-	-	Not Detected	Not Detected
Disperse Blue 26	3860-63-7	µg/L	-	-	n.d.	mg/kg	n.d.	-	-	Not Detected	Not Detected
Disperse Yellow 49	54824-37-2	µg/L	-	-	n.d.	mg/kg	n.d.	-	-	Not Detected	Not Detected
Disperse Blue 35	12222-75-2, 56524-77-7	µg/L	-	-	n.d.	mg/kg	n.d.	-	-	Not Detected	Not Detected
Disperse Blue 124	61951-51-7	µg/L	-	-	n.d.	mg/kg	n.d.	-	-	Not Detected	Not Detected
Disperse Yellow 9	6373-73-5	µg/L	-	-	n.d.	mg/kg	n.d.	-	-	Not Detected	Not Detected
Disperse Orange 3	730-40-5	µg/L	-	-	n.d.	mg/kg	n.d.	-	-	Not Detected	Not Detected
Flame retardants											
Tris(2-chloroethyl) phosphate (TCEP)	115-96-8	µg/L	-	-	n.d.	mg/kg	n.d.	-	-	Not Detected	Not Detected
Decabromodiphenyl ethers (DecaBDE)	1163-19-5	µg/L	-	-	n.d.	mg/kg	n.d.	-	-	Not Detected	Not Detected
Tris(2,3-dibromopropyl) phosphate (TRIS)	126-72-7	µg/L	-	-	n.d.	mg/kg	n.d.	-	-	Not Detected	Not Detected
Pentabromodiphenyl ethers (PentaBDE)	32534-81-9	µg/L	-	-	n.d.	mg/kg	n.d.	-	-	Not Detected	Not Detected
Octabromodiphenyl ethers (OctaBDE)	32536-52-0	µg/L	-	-	n.d.	mg/kg	n.d.	-	-	Not Detected	Not Detected
Bis(2,3-dibromopropyl)phosphate (BIS)	5412-25-9	µg/L	-	-	n.d.	mg/kg	n.d.	-	-	Not Detected	Not Detected
Tris(1-aziridinyl)phosphine oxide (TEPA)	545-55-1	µg/L	-	-	n.d.	mg/kg	n.d.	-	-	Not Detected	Not Detected

This document is issued by the Company subject to its General Conditions of Service printed overleaf, available on request or accessible at <http://www.sgs.com/en/Terms-and-Conditions.aspx> and, for electronic format documents, subject to Terms and Conditions for Electronic Documents at <http://www.sgs.com/en/Terms-and-Conditions/Terms-e-Documents.aspx>. Attention is drawn to the limitation of liability, indemnification and jurisdiction issues defined therein. Any holder of this document is advised that information contained hereon reflects the Company's findings at the time of its intervention only and within the limits of Client's instructions, if any. The Company's sole responsibility is to its Client and this document does not exonerate parties to a transaction from exercising all their rights and obligations under the transaction documents. This document cannot be reproduced except in full, without prior written approval of the Company. Any unauthorized alteration, forgery or falsification of the content or appearance of this document is unlawful and offenders may be prosecuted to the fullest extent of the law. Unless otherwise stated the results shown in this test report refer only to the sample(s) tested.

TEST RESULTS

<div> <div></div> <div>Co., Ltd.</div> <div></div> <div></div> </div>		Sample ID	PX3003901		PX3004001	-	PX3004101	Factory Performance			
		Date of sampling	03/09/2018		03/09/2018	-	03/09/2018				
		Sampling Location	-		-	-	-				
		Sampling start time	09:32		09:00	-	08:50				
		Sampling end time	09:45		15:15	-	08:56				
		Date of sample received	09/03/2018		09/03/2018	-	09/03/2018				
ITEMS	CAS No.	UNIT	Incoming Water	Raw Waste Water	Discharged Waste Water	UNIT	SludgeΦ	Incoming Water	Raw Waste Water	Discharged Waste Water	Sludge
Polybrominated biphenyls (PBBs)	59536-65-1	µg/L	-	-	n.d.	mg/kg	n.d.	-	-	Not Detected	Not Detected
Tetrabromobisphenol A (TBBPA)	79-94-7	µg/L	-	-	n.d.	mg/kg	n.d.	-	-	Not Detected	Not Detected
Hexabromocyclododecane (HBCDD)	134237-50-6, 134237-51-7, 134237-52-8, 25637-99-4, 3194-55-6	µg/L	-	-	n.d.	mg/kg	n.d.	-	-	Not Detected	Not Detected
2,2-Bis(bromomethyl)-1,3-propanediol (BBMP)	3296-90-0	µg/L	-	-	n.d.	mg/kg	n.d.	-	-	Not Detected	Not Detected
Tris(1,3-dichloro-2-propyl) phosphate (TDCPP)	13674-87-8	µg/L	-	-	n.d.	mg/kg	n.d.	-	-	Not Detected	Not Detected
Short Chain Chlorinated Paraffins (SCCP), C ₁₀ -C ₁₃	85535-84-8	µg/L	-	-	n.d.	mg/kg	n.d.	-	-	Not Detected	Not Detected
Glycols											
Bis(2-methoxyethyl)-ether	111-96-6	µg/L	-	-	n.d.	mg/kg	n.d.	-	-	Not Detected	Not Detected
2-Ethoxyethanol	110-80-5	µg/L	-	-	n.d.	mg/kg	n.d.	-	-	Not Detected	Not Detected
2-Ethoxyethyl acetate	111-15-9	µg/L	-	-	n.d.	mg/kg	n.d.	-	-	Not Detected	Not Detected
Ethylene glycol dimethyl ether	110-71-4	µg/L	-	-	n.d.	mg/kg	n.d.	-	-	Not Detected	Not Detected
2-Methoxyethanol	109-86-4	µg/L	-	-	n.d.	mg/kg	n.d.	-	-	Not Detected	Not Detected
2-Methoxyethylacetate	110-49-6	µg/L	-	-	n.d.	mg/kg	n.d.	-	-	Not Detected	Not Detected
2-Methoxypropylacetate	70657-70-4	µg/L	-	-	n.d.	mg/kg	n.d.	-	-	Not Detected	Not Detected
Triethylene glycol dimethyl ether	112-49-2	µg/L	-	-	n.d.	mg/kg	n.d.	-	-	Not Detected	Not Detected
Halogenated solvents											
1,2-Dichloroethane	107-06-2	µg/L	-	-	n.d.	mg/kg	n.d.	-	-	Not Detected	Not Detected
Methylene chloride	75-09-2	µg/L	-	-	n.d.	mg/kg	n.d.	-	-	Not Detected	Not Detected
Trichloroethene	79-01-6	µg/L	-	-	n.d.	mg/kg	n.d.	-	-	Not Detected	Not Detected

This document is issued by the Company subject to its General Conditions of Service printed overleaf, available on request or accessible at <http://www.sgs.com/en/Terms-and-Conditions.aspx> and, for electronic format documents, subject to Terms and Conditions for Electronic Documents at <http://www.sgs.com/en/Terms-and-Conditions/Terms-e-Documents.aspx>. Attention is drawn to the limitation of liability, indemnification and jurisdiction issues defined therein. Any holder of this document is advised that information contained hereon reflects the Company's findings at the time of its intervention only and within the limits of Client's instructions, if any. The Company's sole responsibility is to its Client and this document does not exonerate parties to a transaction from exercising all their rights and obligations under the transaction documents. This document cannot be reproduced except in full, without prior written approval of the Company. Any unauthorized alteration, forgery or falsification of the content or appearance of this document is unlawful and offenders may be prosecuted to the fullest extent of the law. Unless otherwise stated the results shown in this test report refer only to the sample(s) tested.

TEST RESULTS

<div> <div></div> <div>Co., Ltd.</div> <div></div> <div></div> </div>		Sample ID	PX3003901		PX3004001	-	PX3004101	Factory Performance			
		Date of sampling	03/09/2018		03/09/2018	-	03/09/2018				
		Sampling Location	-		-	-	-				
		Sampling start time	09:32		09:00	-	08:50				
		Sampling end time	09:45		15:15	-	08:56				
		Date of sample received	09/03/2018		09/03/2018	-	09/03/2018				
ITEMS	CAS No.	UNIT	Incoming Water	Raw Waste Water	Discharged Waste Water	UNIT	Sludge Φ	Incoming Water	Raw Waste Water	Discharged Waste Water	Sludge
Tetrachloroethene	127-18-4	$\mu\text{g/L}$	-	-	n.d.	mg/kg	n.d.	-	-	Not Detected	Not Detected
Organotin Compounds											
Mono-, di- and tri-methyltin derivatives	Multiple	$\mu\text{g/L}$	-	-	n.d.	mg/kg	n.d.	-	-	Not Detected	Not Detected
Monomethyltin (MMT)	Multiple	$\mu\text{g/L}$	-	-	n.d.	mg/kg	n.d.	-	-	Not Detected	Not Detected
Dimethyltin (DMT)	Multiple	$\mu\text{g/L}$	-	-	n.d.	mg/kg	n.d.	-	-	Not Detected	Not Detected
Trimethyltin (TMT)	Multiple	$\mu\text{g/L}$	-	-	n.d.	mg/kg	n.d.	-	-	Not Detected	Not Detected
Mono-, di- and tri-butyltin derivatives	Multiple	$\mu\text{g/L}$	-	-	n.d.	mg/kg	n.d.	-	-	Not Detected	Not Detected
Monobutyltin (MBT)	1118-46-3, 78763-54-9	$\mu\text{g/L}$	-	-	n.d.	mg/kg	n.d.	-	-	Not Detected	Not Detected
Dibutyltin (DBT)	1002-53-5	$\mu\text{g/L}$	-	-	n.d.	mg/kg	n.d.	-	-	Not Detected	Not Detected
Tributyltin (TBT)	56573-85-4	$\mu\text{g/L}$	-	-	n.d.	mg/kg	n.d.	-	-	Not Detected	Not Detected
Mono-, di- and tri-phenyltin derivatives	Multiple	$\mu\text{g/L}$	-	-	n.d.	mg/kg	n.d.	-	-	Not Detected	Not Detected
Monophenyltin (MPHT)	Multiple	$\mu\text{g/L}$	-	-	n.d.	mg/kg	n.d.	-	-	Not Detected	Not Detected
Diphenyltin (DPHT)	Multiple	$\mu\text{g/L}$	-	-	n.d.	mg/kg	n.d.	-	-	Not Detected	Not Detected
Triphenyltin (TPHT)	892-20-6, 668-34-8	$\mu\text{g/L}$	-	-	n.d.	mg/kg	n.d.	-	-	Not Detected	Not Detected
Mono-, di- and tri-octyltin derivatives	Multiple	$\mu\text{g/L}$	-	-	n.d.	mg/kg	n.d.	-	-	Not Detected	Not Detected
Monooctyltin (MOT)	15231-57-9	$\mu\text{g/L}$	-	-	n.d.	mg/kg	n.d.	-	-	Not Detected	Not Detected
Diocetyl tin (DOT)	94410-05-6, 12531-44-4	$\mu\text{g/L}$	-	-	n.d.	mg/kg	n.d.	-	-	Not Detected	Not Detected
Triocetyl tin (TOT)	Multiple	$\mu\text{g/L}$	-	-	n.d.	mg/kg	n.d.	-	-	Not Detected	Not Detected
Perfluorinated / Polyfluorinated Chemicals (PFCs)											
PFOS	1763-23-1	$\mu\text{g/L}$	-	-	n.d.	mg/kg	n.d.	-	-	Not Detected	Not Detected
PFOA	335-67-1	$\mu\text{g/L}$	-	-	n.d.	mg/kg	n.d.	-	-	Not Detected	Not Detected

TEST RESULTS

<div> <div></div> <div>Co., Ltd.</div> <div></div> <div></div> </div>	Sample ID	PX3003901		PX3004001	-	PX3004101	Factory Performance				
	Date of sampling	03/09/2018		03/09/2018	-	03/09/2018					
	Sampling Location	-		-	-	-					
	Sampling start time	09:32		09:00	-	08:50					
	Sampling end time	09:45		15:15	-	08:56					
	Date of sample received	09/03/2018		09/03/2018	-	09/03/2018					
ITEMS	CAS No.	UNIT	Incoming Water	Raw Waste Water	Discharged Waste Water	UNIT	SludgeΦ	Incoming Water	Raw Waste Water	Discharged Waste Water	Sludge
PFBS	375-73-5, 59933-66-3, 29420-49-3, 29420-43-3	µg/L	-	-	n.d.	mg/kg	n.d.	-	-	Not Detected	Not Detected
PFHxA	307-24-4	µg/L	-	-	n.d.	mg/kg	n.d.	-	-	Not Detected	Not Detected
8:2 FTOH	678-39-7	µg/L	-	-	n.d.	mg/kg	n.d.	-	-	Not Detected	Not Detected
6:2 FTOH	647-42-7	µg/L	-	-	n.d.	mg/kg	n.d.	-	-	Not Detected	Not Detected
Phthalates											
Di(2-Ethyl Hexyl) Phthalate (DEHP)	117-81-7	µg/L	-	-	n.d.	mg/kg	n.d.	-	-	Not Detected	Not Detected
Bis(2-methoxyethyl)phthalate (DMEP)	117-82-8	µg/L	-	-	n.d.	mg/kg	n.d.	-	-	Not Detected	Not Detected
Di-N-Octyl Phthalate (DNOP)	117-84-0	µg/L	-	-	n.d.	mg/kg	n.d.	-	-	Not Detected	Not Detected
Di-Iso-Decyl Phthalate (DIDP)	26761-40-0, 68515-49-1	µg/L	-	-	n.d.	mg/kg	n.d.	-	-	Not Detected	Not Detected
Di-Iso-Nonyl Phthalate (DINP)	28553-12-0, 68515-48-0	µg/L	-	-	n.d.	mg/kg	n.d.	-	-	Not Detected	Not Detected
Di-N-Hexyl Phthalate (DNHP)	84-75-3	µg/L	-	-	n.d.	mg/kg	n.d.	-	-	Not Detected	Not Detected
Dibutyl Phthalate (DBP)	84-74-2	µg/L	-	-	n.d.	mg/kg	n.d.	-	-	Not Detected	Not Detected
Benzyl Butyl Phthalate (BBP)	85-68-7	µg/L	-	-	n.d.	mg/kg	n.d.	-	-	Not Detected	Not Detected
Dinonyl phthalate (DNP)	84-76-4	µg/L	-	-	n.d.	mg/kg	n.d.	-	-	Not Detected	Not Detected
Diethyl Phthalate (DEP)	84-66-2	µg/L	-	-	n.d.	mg/kg	n.d.	-	-	Not Detected	Not Detected
Di-N-Propyl Phthalate (DPRP)	131-16-8	µg/L	-	-	n.d.	mg/kg	n.d.	-	-	Not Detected	Not Detected
Di-Iso-Butyl Phthalate (DIBP)	84-69-5	µg/L	-	-	n.d.	mg/kg	n.d.	-	-	Not Detected	Not Detected
Dicyclohexyl Phthalate (DCHP)	84-61-7	µg/L	-	-	n.d.	mg/kg	n.d.	-	-	Not Detected	Not Detected
Di-Iso-Octyl Phthalate (DIOP)	27554-26-3	µg/L	-	-	n.d.	mg/kg	n.d.	-	-	Not Detected	Not Detected

This document is issued by the Company subject to its General Conditions of Service printed overleaf, available on request or accessible at <http://www.sgs.com/en/Terms-and-Conditions.aspx> and, for electronic format documents, subject to Terms and Conditions for Electronic Documents at <http://www.sgs.com/en/Terms-and-Conditions/Terms-e-Documents.aspx>. Attention is drawn to the limitation of liability, indemnification and jurisdiction issues defined therein. Any holder of this document is advised that information contained hereon reflects the Company's findings at the time of its intervention only and within the limits of Client's instructions, if any. The Company's sole responsibility is to its Client and this document does not exonerate parties to a transaction from exercising all their rights and obligations under the transaction documents. This document cannot be reproduced except in full, without prior written approval of the Company. Any unauthorized alteration, forgery or falsification of the content or appearance of this document is unlawful and offenders may be prosecuted to the fullest extent of the law. Unless otherwise stated the results shown in this test report refer only to the sample(s) tested.

TEST RESULTS

<div> <div></div> <div>Co., Ltd.</div> <div></div> <div></div> </div>	Sample ID	PX3003901		PX3004001	-	PX3004101	Factory Performance				
	Date of sampling	03/09/2018		03/09/2018	-	03/09/2018					
	Sampling Location	-		-	-	-					
	Sampling start time	09:32		09:00	-	08:50					
	Sampling end time	09:45		15:15	-	08:56					
	Date of sample received	09/03/2018		09/03/2018	-	09/03/2018					
ITEMS	CAS No.	UNIT	Incoming Water	Raw Waste Water	Discharged Waste Water	UNIT	SludgeΦ	Incoming Water	Raw Waste Water	Discharged Waste Water	Sludge
1,2-Benzenedicarboxylic acid, Di-C7-11 Branched and Linear Alkyl Esters (DHNUP)	68515-42-4	µg/L	-	-	n.d.	mg/kg	n.d.	-	-	Not Detected	Not Detected
1,2-Benzenedicarboxylic acid, Di-C6-8 Branched Alkyl Esters, C7-rich (DIHP)	71888-89-6	µg/L	-	-	n.d.	mg/kg	n.d.	-	-	Not Detected	Not Detected
Polycyclic Aromatic Hydrocarbons (PAHs)											
Bezo[a]pyrene	50-32-8	µg/L	-	-	n.d.	mg/kg	n.d.	-	-	Not Detected	Not Detected
Anthracene	120-12-7	µg/L	-	-	n.d.	mg/kg	n.d.	-	-	Not Detected	Not Detected
Pyrene	129-00-0	µg/L	-	-	n.d.	mg/kg	n.d.	-	-	Not Detected	Not Detected
Benzo[ghi]perylene	191-24-2	µg/L	-	-	n.d.	mg/kg	n.d.	-	-	Not Detected	Not Detected
Benzo[e]pyrene	192-97-2	µg/L	-	-	n.d.	mg/kg	n.d.	-	-	Not Detected	Not Detected
Indeno[1,2,3-cd]pyrene	193-39-5	µg/L	-	-	n.d.	mg/kg	n.d.	-	-	Not Detected	Not Detected
Benzo[j]fluoranthene	205-82-3	µg/L	-	-	n.d.	mg/kg	n.d.	-	-	Not Detected	Not Detected
Benzo[b]fluoranthene	205-99-2	µg/L	-	-	n.d.	mg/kg	n.d.	-	-	Not Detected	Not Detected
Fluoranthene	206-44-0	µg/L	-	-	n.d.	mg/kg	n.d.	-	-	Not Detected	Not Detected
Benzo[k]fluoranthene	207-08-9	µg/L	-	-	n.d.	mg/kg	n.d.	-	-	Not Detected	Not Detected
Acenaphthylene	208-96-8	µg/L	-	-	n.d.	mg/kg	n.d.	-	-	Not Detected	Not Detected
Chrysene	218-01-9	µg/L	-	-	n.d.	mg/kg	n.d.	-	-	Not Detected	Not Detected
Dibenz[a,h]anthracene	53-70-3	µg/L	-	-	n.d.	mg/kg	n.d.	-	-	Not Detected	Not Detected
Benzo[a]anthracene	56-55-3	µg/L	-	-	n.d.	mg/kg	n.d.	-	-	Not Detected	Not Detected
Acenaphthene	83-32-9	µg/L	-	-	n.d.	mg/kg	n.d.	-	-	Not Detected	Not Detected
Phenanthrene	85-01-8	µg/L	-	-	n.d.	mg/kg	n.d.	-	-	Not Detected	Not Detected
Fluorene	86-73-7	µg/L	-	-	n.d.	mg/kg	n.d.	-	-	Not Detected	Not Detected

This document is issued by the Company subject to its General Conditions of Service printed overleaf, available on request or accessible at <http://www.sgs.com/en/Terms-and-Conditions.aspx> and, for electronic format documents, subject to Terms and Conditions for Electronic Documents at <http://www.sgs.com/en/Terms-and-Conditions/Terms-e-Documents.aspx>. Attention is drawn to the limitation of liability, indemnification and jurisdiction issues defined therein. Any holder of this document is advised that information contained herein reflects the Company's findings at the time of its intervention only and within the limits of Client's instructions, if any. The Company's sole responsibility is to its Client and this document does not exonerate parties to a transaction from exercising all their rights and obligations under the transaction documents. This document cannot be reproduced except in full, without prior written approval of the Company. Any unauthorized alteration, forgery or falsification of the content or appearance of this document is unlawful and offenders may be prosecuted to the fullest extent of the law. Unless otherwise stated the results shown in this test report refer only to the sample(s) tested.

TEST RESULTS

<div> <div></div> <div>Co., Ltd.</div> <div></div> <div></div> </div>		Sample ID	PX3003901		PX3004001	-	PX3004101	Factory Performance			
		Date of sampling	03/09/2018		03/09/2018	-	03/09/2018				
		Sampling Location	-		-	-	-				
		Sampling start time	09:32		09:00	-	08:50				
		Sampling end time	09:45		15:15	-	08:56				
		Date of sample received	09/03/2018		09/03/2018	-	09/03/2018				
ITEMS	CAS No.	UNIT	Incoming Water	Raw Waste Water	Discharged Waste Water	UNIT	Sludge Φ	Incoming Water	Raw Waste Water	Discharged Waste Water	Sludge
Naphthalene	91-20-3	$\mu\text{g/L}$	-	-	n.d.	mg/kg	n.d.	-	-	Not Detected	Not Detected
Volatile Organic Compounds (VOCs)											
Benzene	71-43-2	$\mu\text{g/L}$	-	-	n.d.	mg/kg	n.d.	-	-	Not Detected	Not Detected
Xylene	1330-20-7	$\mu\text{g/L}$	-	-	n.d.	mg/kg	n.d.	-	-	Not Detected	Not Detected
o-cresol	95-48-7	$\mu\text{g/L}$	-	-	n.d.	mg/kg	n.d.	-	-	Not Detected	Not Detected
p-cresol	106-44-5	$\mu\text{g/L}$	-	-	n.d.	mg/kg	n.d.	-	-	Not Detected	Not Detected
m-cresol	108-39-4	$\mu\text{g/L}$	-	-	n.d.	mg/kg	n.d.	-	-	Not Detected	Not Detected
Additional Parameters											
Moisture Content	-	-	-	-	-	%	11.4	-	-	-	-

Remarks:

n.d. = Not Detected

Φ The sludge is reported base on dry mass and the moisture content of sludge = 11.4%

[^]The test result is based on the calculation of selected element(s) and to the worst-case scenario

TEST PARAMETERS

ITEMS	CAS No.	METHODS	Water Testing Reporting Limits	UNIT	Sludge Testing Reporting Limits	UNIT
Conventional Parameters						
Temperature	-	USEPA 170.1 or GB/T 13195	-	°C	-	-
TSS	-	USEPA 160.2, APHA 2540D, ISO 11923 or GB/T 11901	5	mg/L	-	-
COD	-	USEPA 410.4, APHA 5220D, ISO 6060 or GB/T 11914	10	mg/L	-	-
Total Nitrogen (Total-N)	-	USEPA 351.2, APHA 4500P-J, APHA 4500N-C, ISO 5663, ISO 29441, HJ 636	5	mg/L	-	-
pH Value	-	USEPA 150.1, APHA 4500-H+, ISO 10523 or GB/T 6920	-	-	-	-
Colour (436nm; 525nm; 620nm)	-	ISO 7887 (Method B)	-	m ⁻¹	-	-
BOD (5-day)	-	USEPA 405.1, APHA 5210B, ISO 5815-1 or HJ 505	5	mg/L	-	-
Ammonium Nitrogen (Ammonium-N)	-	USEPA 350.1, APHA 4500NH ₃ -N, ISO 7150, ISO 11732, HJ 535 or HJ 536	0.5	mg/L	-	-
Total Phosphorus (Total-P)	-	USEPA 365.4, APHA 4500P-J, ISO 6878, ISO 11885 or GB/T 11893	0.1	mg P/L	-	-
AOX	-	USEPA 1650, ISO 9562, HJ/T 83	0.1	mg/L	-	-
Oil and Grease	-	USEPA 1664, ISO 9377-2, HJ 637	0.5	mg/L	-	-
Phenol	-	APHA 5530 B, C & D, ISO 14402 or HJ 503	0.001	mg/L	-	-
Coliform	-	USEPA 9132, ISO 9308 or GB/T 5750.12	25	Bacteria / 100ml	-	-
Persistent Foam	-	N/A	Not visible	-	-	-
Anions						
Cyanide	-	USEPA 335.2, APHA 4500-CN, HJ 484, HJ 745 (for sludge)	0.05	mg/L	0.5	mg/kg
Sulfide	-	APHA 4500-S ₂ -D, ISO 10530 or GB/T 16489	0.01	mg/L	-	-
Sulfite	-	USEPA 377.1, ISO10304-3 or HJ 84	0.2	mg/L	-	-
Metals						
Total Antimony (Sb)	7440-36-0		0.01	mg/L	-	-
Total Chromium (Cr)	7440-47-3		0.05	mg/L	-	-

This document is issued by the Company subject to its General Conditions of Service printed overleaf, available on request or accessible at <http://www.sgs.com/en/Terms-and-Conditions.aspx> and, for electronic format documents, subject to Terms and Conditions for Electronic Documents at <http://www.sgs.com/en/Terms-and-Conditions/Terms-e-Documents.aspx>. Attention is drawn to the limitation of liability, indemnification and jurisdiction issues defined therein. Any holder of this document is advised that information contained hereon reflects the Company's findings at the time of its intervention only and within the limits of Client's instructions, if any. The Company's sole responsibility is to its Client and this document does not exonerate parties to a transaction from exercising all their rights and obligations under the transaction documents. This document cannot be reproduced except in full, without prior written approval of the Company. Any unauthorized alteration, forgery or falsification of the content or appearance of this document is unlawful and offenders may be prosecuted to the fullest extent of the law. Unless otherwise stated the results shown in this test report refer only to the sample(s) tested.

TEST PARAMETERS

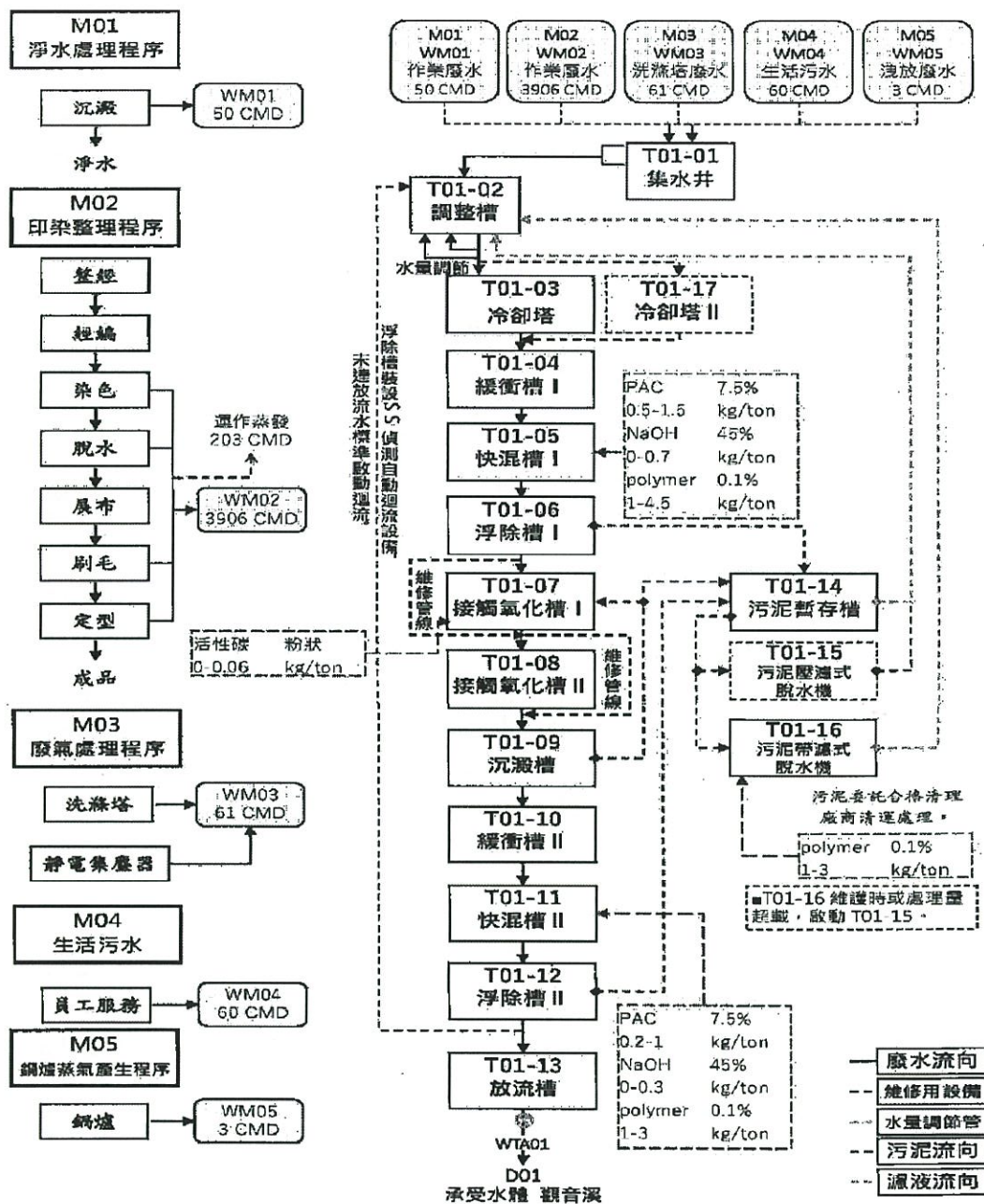
ITEMS	CAS No.	METHODS	Water Testing Reporting Limits	UNIT	Sludge Testing Reporting Limits	UNIT
Total Cobalt (Co)	7440-48-4	With reference to USEPA 200.7, USEPA 200.8, USEPA 6010C, USEPA 6020A, ISO 11885, HJ 700 or Acid Digestion followed by ICP or ICP/MS analysis	0.01	mg/L	-	-
Total Copper (Cu)	7440-50-8		0.25	mg/L	-	-
Total Nickel (Ni)	7440-02-0		0.05	mg/L	-	-
Total Silver (Ag)	7440-22-4		0.005	mg/L	-	-
Total Zinc (Zn)	7440-66-6		0.5	mg/L	-	-
Total Arsenic (As)	7440-38-2		0.005	mg/L	1	mg/kg
Total Cadmium (Cd)	7440-43-9		0.01	mg/L	1	mg/kg
Total Hexavalent Chromium (Cr-VI)	7440-47-3, 18540-29-9		0.001	mg/L	1	mg/kg
Total Lead (Pb)	7439-92-1		0.01	mg/L	1	mg/kg
Total Mercury (Hg)	7439-97-6		0.001	mg/L	1	mg/kg
Alkylphenols (APs) and Alkylphenol Ethoxylates (APEOs)						
NP / OP		With reference to ISO 18857-2 or ASTM D7065 followed by GC/MS or LC/MS analysis	5	µg/L	0.2	mg/kg
NPEO / OPEO		With reference to ISO 18254-1, ISO 18857-2 or ASTM D7065 followed by GC/MS or LC/MS analysis	5	µg/L	0.2	mg/kg
Chlorobenzenes and Chlorotoluenes (COCs)		With reference to USEPA 8260B, USEPA 8270D or solvent extraction followed by GC/MS analysis	0.2	µg/L	0.1	mg/kg
Chlorophenols		With reference to USEPA 8270D, ISO 14154 or solvent extraction and derivatisation with KOH, acetic anhydride followed by GC/MS analysis.	0.5	µg/L	0.025	mg/kg
Azo dyes		With reference to USEPA 8270D, EN 14362-1, EN 14362-3 or Solvent extraction with sodium dithionite reduction followed by GC/MS and HPLC analysis.	0.1	µg/L	0.1	mg/kg

This document is issued by the Company subject to its General Conditions of Service printed overleaf, available on request or accessible at <http://www.sgs.com/en/Terms-and-Conditions.aspx> and, for electronic format documents, subject to Terms and Conditions for Electronic Documents at <http://www.sgs.com/en/Terms-and-Conditions/Terms-e-Documents.aspx>. Attention is drawn to the limitation of liability, indemnification and jurisdiction issues defined therein. Any holder of this document is advised that information contained hereon reflects the Company's findings at the time of its intervention only and within the limits of Client's instructions, if any. The Company's sole responsibility is to its Client and this document does not exonerate parties to a transaction from exercising all their rights and obligations under the transaction documents. This document cannot be reproduced except in full, without prior written approval of the Company. Any unauthorized alteration, forgery or falsification of the content or appearance of this document is unlawful and offenders may be prosecuted to the fullest extent of the law. Unless otherwise stated the results shown in this test report refer only to the sample(s) tested.

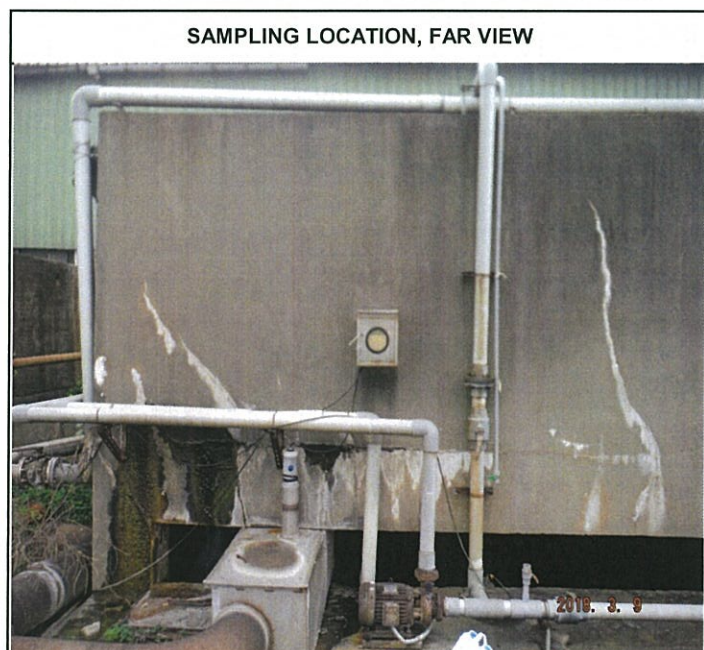
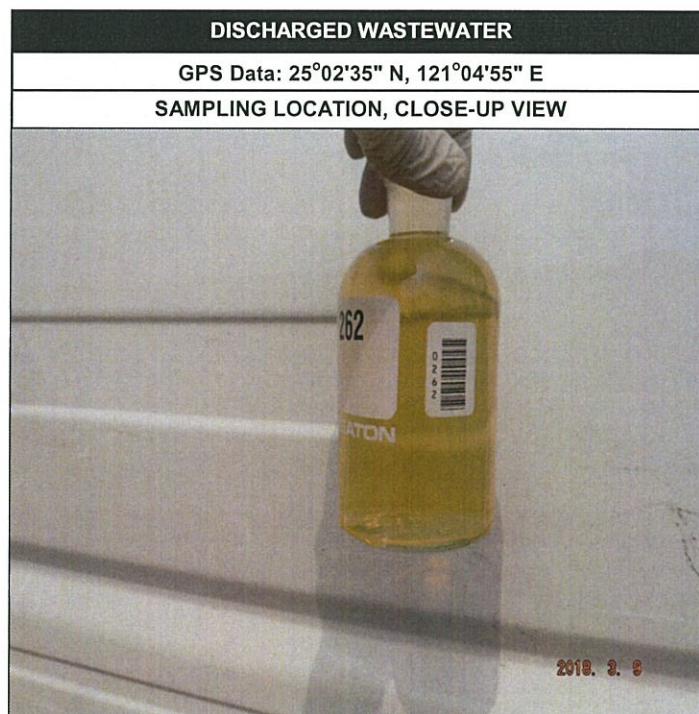
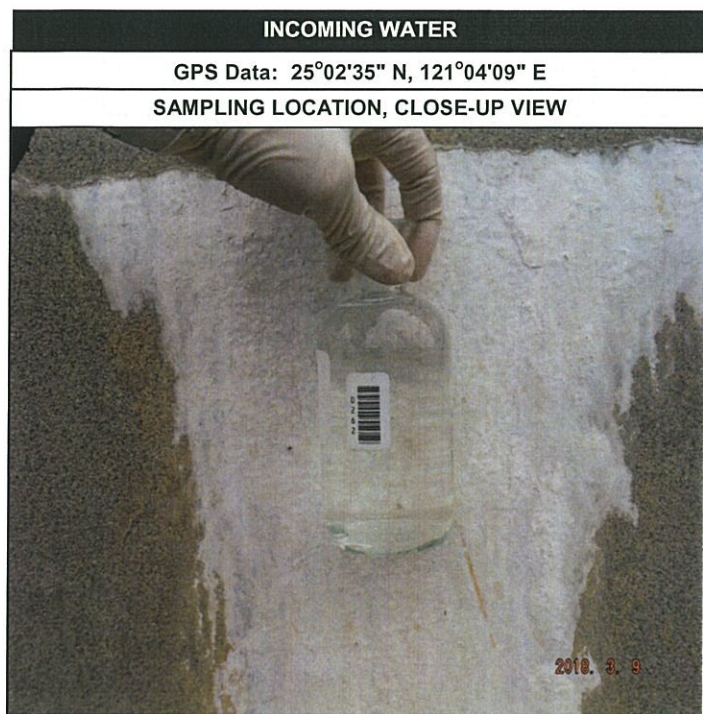
TEST PARAMETERS

ITEMS	CAS No.	METHODS	Water Testing Reporting Limits	UNIT	Sludge Testing Reporting Limits	UNIT
Carcinogenic dyes		Solvent extraction followed by LC/MS analysis.	500	µg/L	1	mg/kg
Disperse dyes		Solvent extraction followed by LC/MS analysis.	50	µg/L	1	mg/kg
Flame retardants		With reference to USEPA 527, USEPA 8270, USEPA 8321B, ISO 22032 or solvent extraction followed by GC/MS or LC/MS analysis	5	µg/L	1	mg/kg
Glycols		With reference to USEPA 8270D or solvent extraction followed by GC/MS or LC/MS analysis	50	µg/L	5	mg/kg
Halogenated solvents		With reference to USEPA 8260B, Purge&Trap, Head-space or Solvent extraction followed by GC/MS analysis	1	µg/L	1	mg/kg
Organotin Compounds		With reference to ISO17353 and derivatisation with sodium diethyl dithiocarbamate followed by GC/MS analysis.	0.01	µg/L	0.1	mg/kg
Perfluorinated / Polyfluorinated Chemicals (PFCs)						
FTOHs		With reference to DIN38407-42 or CEN/TS 15968 and derivatisation with acetic anhydride followed by GC/MS analysis.	1	µg/L	0.5	mg/kg
Others		With reference to DIN38407-42 or CEN/TS 15968 and followed by LCMS or LC/MS/MS analysis	0.01	µg/L	0.05	mg/kg
Phthalates		With reference to USEPA 8270D, ISO 18856, or solvent extraction followed by GC/MS analysis	10	µg/L	1	mg/kg
2M. Polycyclic Aromatic Hydrocarbons (PAHs)		With reference to USEPA 8270, DIN 38407-39 or solvent extraction followed by GC/MS analysis	1	µg/L	1	mg/kg
Volatile Organic Compounds (VOCs)		With reference to USEPA 8260B, ISO 11423-1, Purge&Trap, Head-space or Solvent extraction followed by GC/MS analysis	1	µg/L	0.1	mg/kg

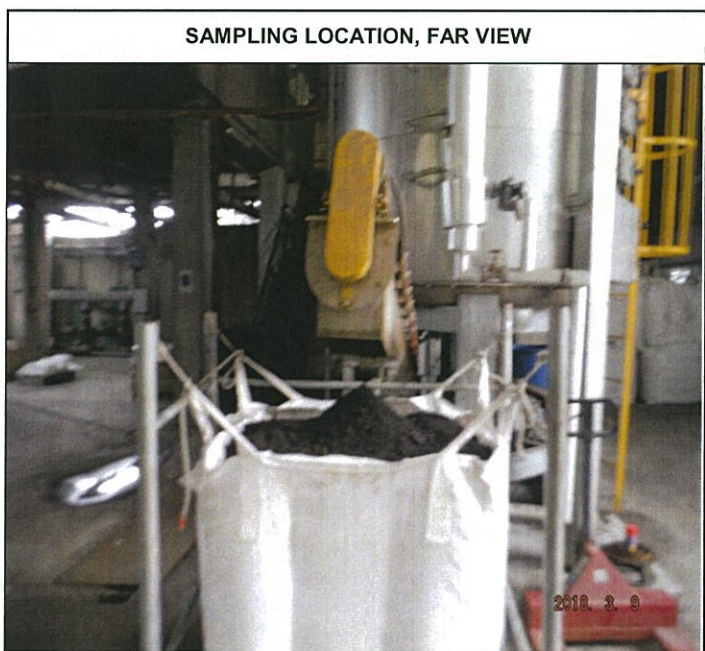
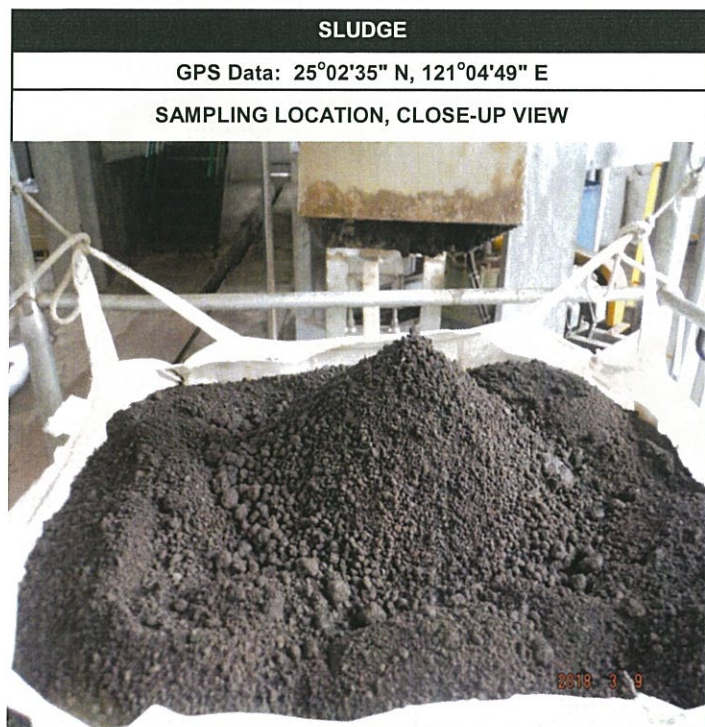
PIPING PLAN



SAMPLING PHOTOS



SAMPLING PHOTOS



***** END OF REPORT *****

This document is issued by the Company subject to its General Conditions of Service printed overleaf, available on request or accessible at <http://www.sgs.com/en/Terms-and-Conditions.aspx> and, for electronic format documents, subject to Terms and Conditions for Electronic Documents at <http://www.sgs.com/en/Terms-and-Conditions/Terms-e-Document.aspx>. Attention is drawn to the limitation of liability, indemnification and jurisdiction issues defined therein. Any holder of this document is advised that information contained hereon reflects the Company's findings at the time of its intervention only and within the limits of Client's instructions, if any. The Company's sole responsibility is to its Client and this document does not exonerate parties to a transaction from exercising all their rights and obligations under the transaction documents. This document cannot be reproduced except in full, without prior written approval of the Company. Any unauthorized alteration, forgery or falsification of the content or appearance of this document is unlawful and offenders may be prosecuted to the fullest extent of the law. Unless otherwise stated the results shown in this test report refer only to the sample(s) tested.